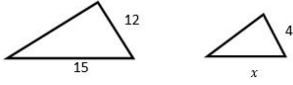


Name: \_\_\_\_\_

Date: \_\_\_\_\_

**Similar Figures****Each pair of figures is similar. Find the missing side.**

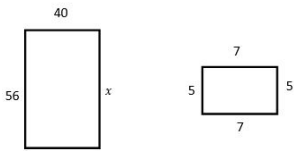
1)



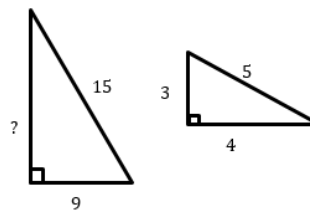
2)



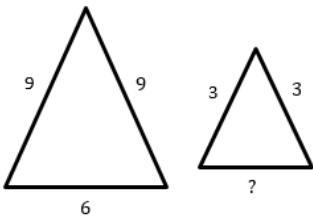
3)



4)



5)

**Solve.**

6) Two rectangles are similar. The first is 6 feet wide and 20 feet long. The second is 15 feet wide. What is the length of the second rectangle? \_\_\_\_\_

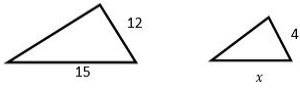
7) The scale of a map of Texas is 2 inches: 45 miles. If you measure the distance from Dallas to Martin County as 14.4 inches, approximately how far is Martin County from Dallas?

8) A building casts a shadow 24 ft long. At the same time a girl 5 ft tall casts a shadow 2 ft long. How tall is the building?

9) Two rectangles are similar. One is 2.5 meters by 9 meters. The longer side of the second rectangle is 22.5 meters. What is the other side of the second rectangle?



1)



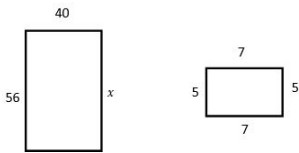
5

2)



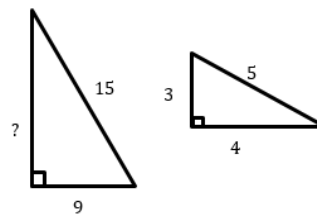
3

3)



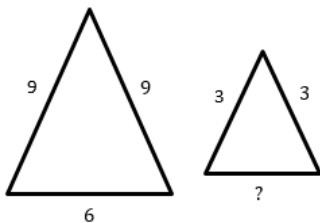
56

4)



12

5)



2

6) Two rectangles are similar. The first is 6 feet wide and 20 feet long. The second is 15 feet wide. What is the length of the second rectangle? \_\_\_\_\_

5 feet

7) The scale of a map of Texas is 2 inches: 45 miles. If you measure the distance from Dallas to Martin County as 14.4 inches, approximately how far is Martin County from Dallas?

324 miles

8) A building casts a shadow 24 ft long. At the same time a girl 5 ft tall casts a shadow 2 ft long. How tall is the building?

60 feet

9) Two rectangles are similar. One is 2.5 meters by 9 meters. The longer side of the second rectangle is 22.5 meters. What is the other side of the second rectangle?

6.25 meters